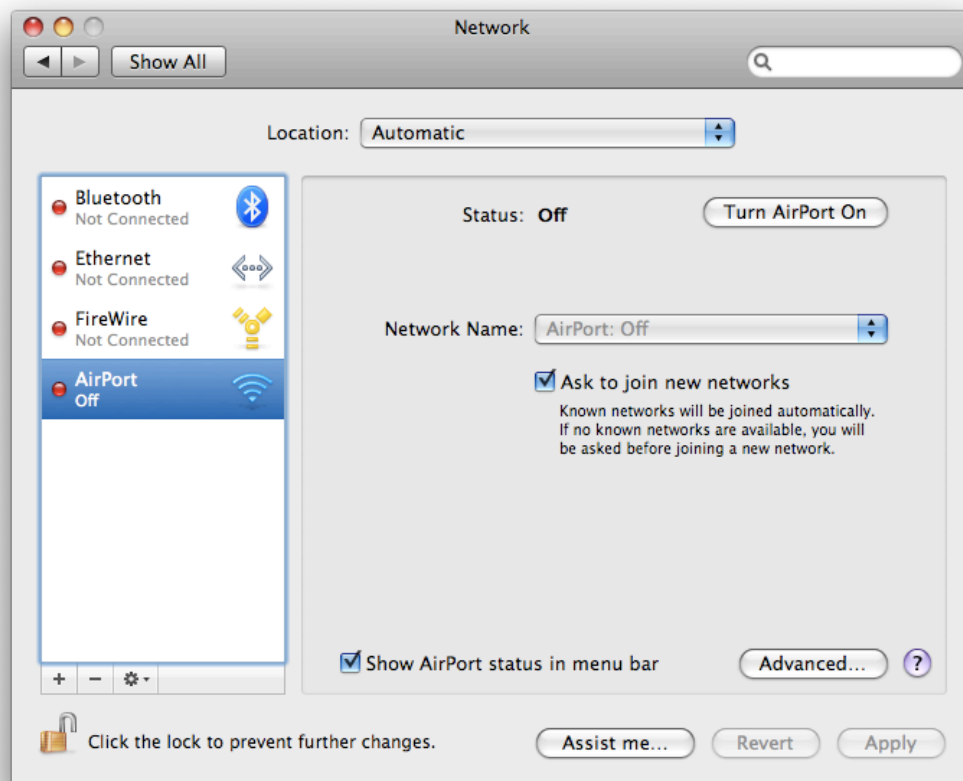


## Connecting to the Gonzaga Community Wireless Network: Mac OS X

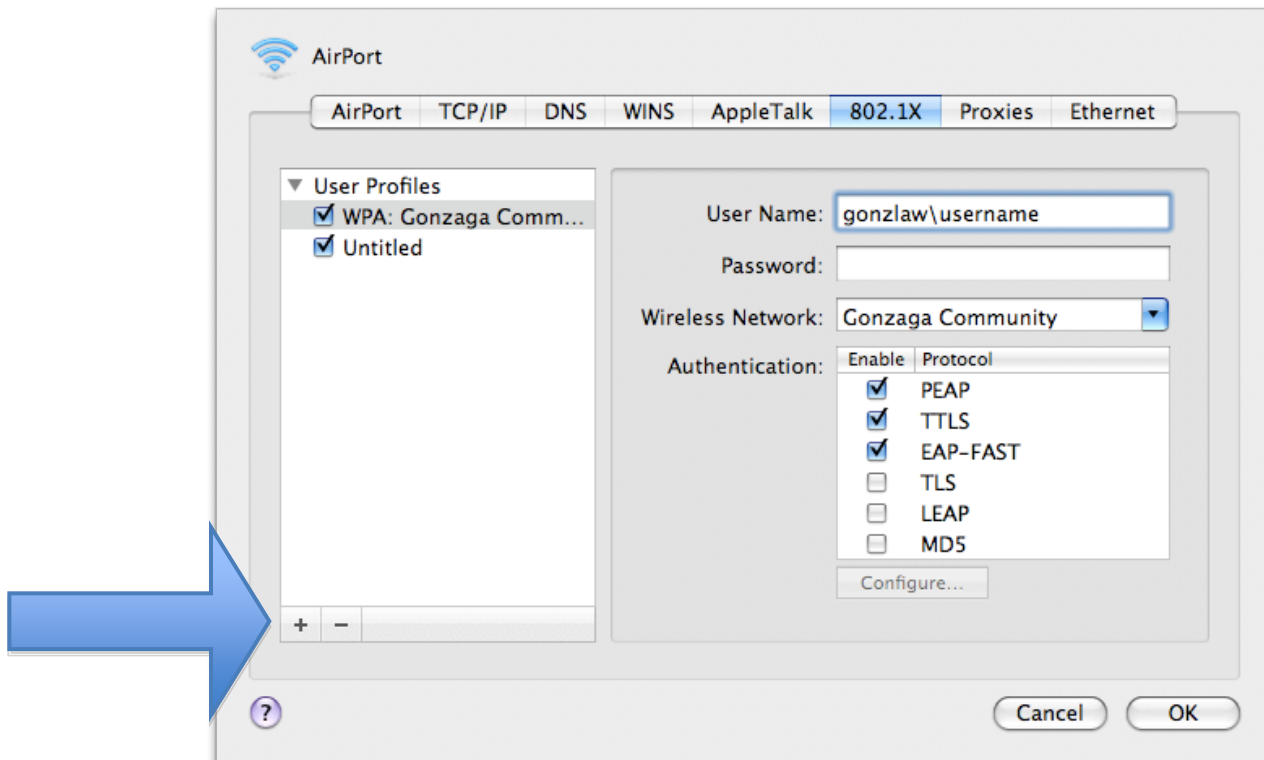


1. Open **System Preferences** ⇒ click the **Network** icon
2. Select **AirPort**
3. If necessary, click **Turn Airport On**
4. Check the box next to **Show AirPort status in menu bar**, if necessary



5. Click **Advanced**
6. Select the **TCP/IP** tab ⇒ **Configure IPv4** ⇒ select **Using DHCP** from the drop-down list
7. Select the **802.1x** tab ⇒ click the **plus sign (+)** at the bottom ⇒ select **Add User Profile**

## Connecting to the Gonzaga Community Wireless Network: Mac OS X



- User Name: Enter “gonzlaw\username”
- Password: Enter your password
- Wireless Network: Select **Gonzaga Community**
- Authentication: check **EAP-FAST** box ⇒ click **OK**

8. The first time you connect to the Gonzaga Community Network, you will be asked to accept a certificate.

- You’ll see a dialog box with the message: “The server certificate is not trusted because there are no explicit trust settings.”
- Choose **Show Certificate**
- Expand the **Trust** tab ⇒ under **When using this Certificate** ⇒ select **Always Trust**
- Enter your Mac administrator password to confirm

If you have any questions or need further assistance please stop by the Help Desk or Dalean’s office.